

HIGH PRESSURE ROTARY FEEDER - HPRF

Application:

High-pressure rotary feeder is designed to discharge and to feed Granular Products in Pneumatic Conveying Systems. The reduced Leakage air solution helps to use for pressure differences up to 3.5 bars.

Size:

200-250

Standard Design Features:

- Study Cast Housing with reinforcement for extra rigidity.
- Field proven inlet and outlet deflectors for gentle product flow and maximum possible filling efficiency.
- Closed SS Rotor with 12 Pockets.
- Maintenance free ball bearing.
- Single lip shaft sealing.
- Telltale hole for outside indication of seal damage.
- Seal wear level indicators for in time replacement of seals.
- Self-adjusting axial sealing.
- Seal change in minimum down time.
- Air venting is build up into the body. Pressure proof up to 10 bar.
- Temperature Range up to 150°C for Aluminium and 160°C for CI and SS.
- Flange connection as per DIN or ANSI Standard.



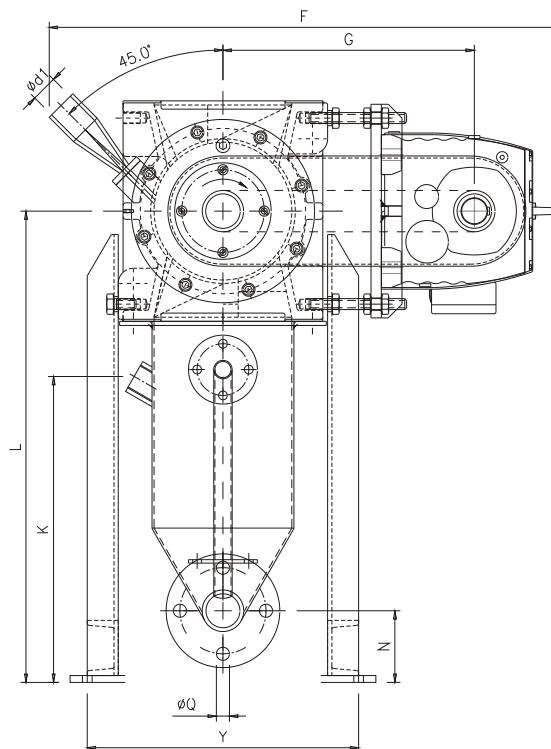
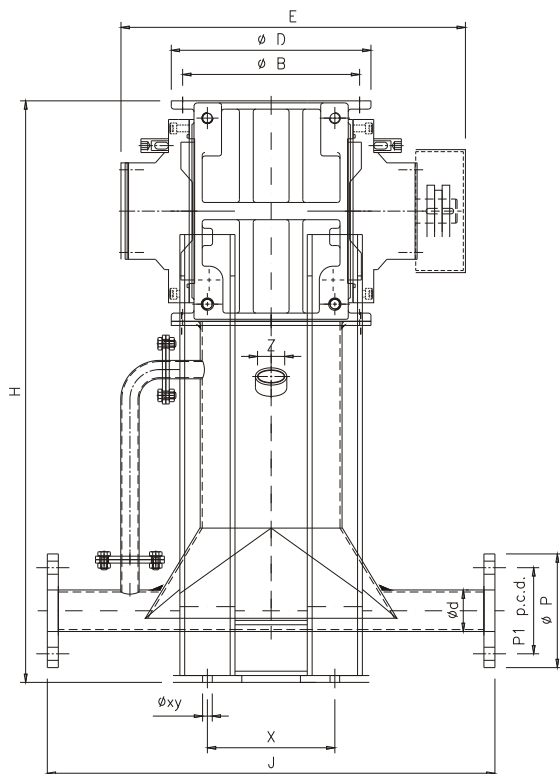
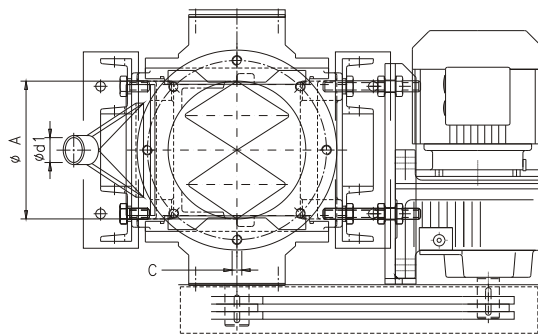
Material of Construction:

- Housing and Side Plates in Cast Iron Chrome Plated or Aluminium or Stainless Steel.
- Closed SS-304 welded Rotor with polished Side Plates.
- Chain Drive with MS painted cover.

Options:

- Purging Solenoid with High Pressure Hoses and Connections.
- Enlarged Line Injector Made of Stainless Steel.
- Support made of MS Painted.

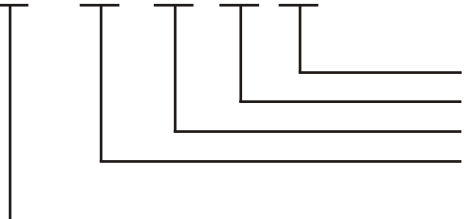
ALL DIMENSIONS ARE IN MM
DRAWING IS SUBJECT TO CONSTANT IMPROVEMENT



TYPE	VOL IN Litres	Ø A	Ø B	C	Ø D	E	F	G	L	H	J	N	Ø d	Ø P1	Ø P	Ø Q
HPRF200	5.4	200	298	M22 (8x)	343	500	740	365	685	845	650	105	Ø 49.2x5.54	125	165	Ø 14 (4x)
HPRF250	10.5	250	362	M22 (12x)	406	590	910	400	815	995	850	165	Ø 114.3x2.9	191	229	Ø 19 (4x)

TYPE	VOL IN Litres	Ø d1	X	Y	Ø xy	K	Z	SUPPLY POWER	WEIGHT (S.S/C.I.) IN Kg.	TOTAL ASSEMBLY WEIGHT ARE APPROX. * INCLUDING GEAR MOTOR
HPRF200	5.4	Ø 40.9x3.65	185	394	Ø 14 (4x)	445	1 1/2" BSP	0.55	210	
HPRF250	10.5	Ø 52.5x3.91	230	495	Ø 14 (4x)	530	2" BSP	0.75	320	

HPRF-SA-200-SS-SS



MOC OF HOUSING, CI, AL.
MOC OF ROTOR
NOMINAL ROTOR Ø IN MM.
PA = PNEUMATIC ACTION
SA = SPRING ACTION



PAREKH CONSULTANTS & ENGINEERS

Office : C-11, Meeraj Apartments, Beh. Natubhai Centre, Gotri Road, Baroda - 390005., Gujarat, India.

Telephone : 0091-265-2395677 / 5542226

Telefax : 0091-265-2391783

E-mail : pce@icenet.net

Website : www.pce-india.com