

INJECTOR

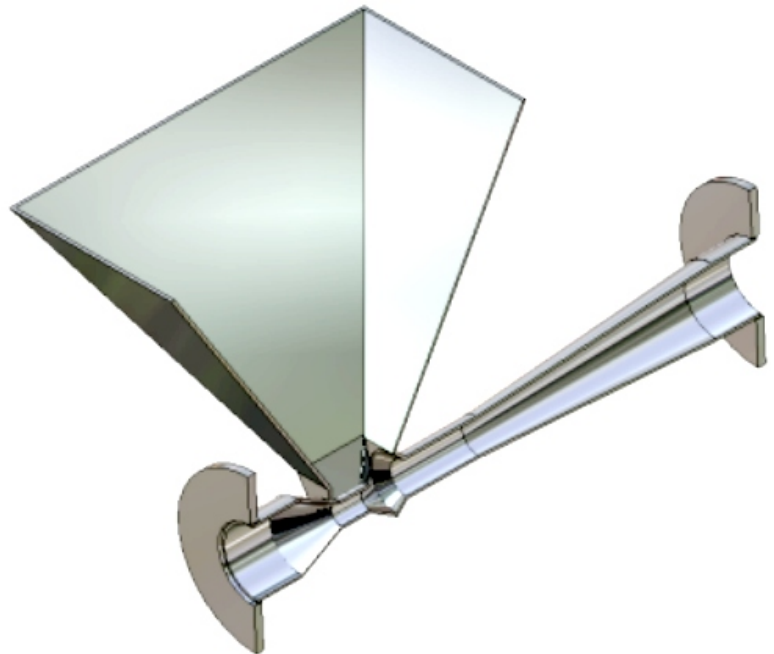
Application:

Injector is used for pneumatic transport of granular and powdery solids, for suction of endless side cut taper and plastics strips in paper and plastic film industries, suction of fibre thread in fibre manufacturing industries and suction of fumes in spring manufacturing or in equivalent industries.

Principle:

The function of injector is based on venturi effect. The high velocity injection of conveying air generates necessary vacuum for discharge and metering of solids into the injector.

Computer designed mixing chamber with subsequent diffusor section regains the energy to achieve maximum efficiency factor of installed energy and convey the product to its destination.



Advantages:

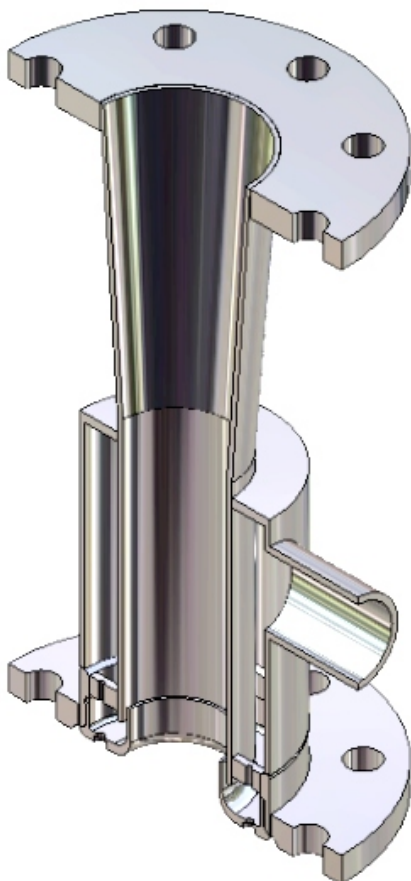
- Self metering and self controlled application
- No plugging of transport line during pneumatic transport
- Lowest possible maintenance as no moving parts
- Also possible for abrasive material with special lining
- No over pressure build up and leakage at metering point
- Compact construction

Standard operating features:

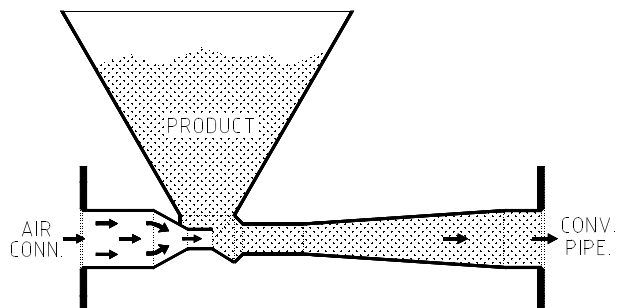
- Design to match existing piping layout
- We deliver free pneumatic transport calculation with Injector purchase and injector application
- Application with plant compressed air or with roots blower or side channel blower or with centrifugal blower (fan).

Material of construction:

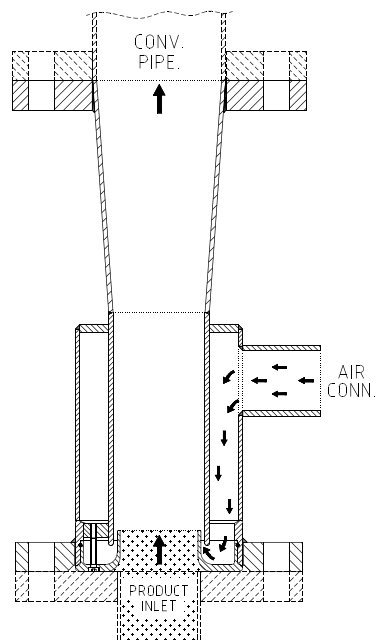
- Mild Steel, Stainless Steel 304/316
- Optional hardening /Nitrating or Ceramic lining available



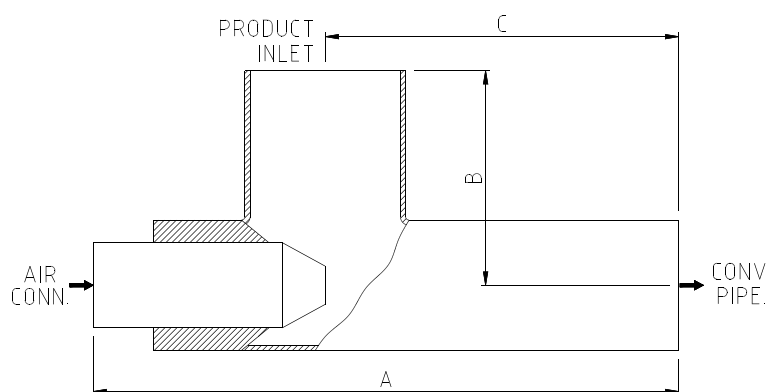
DIFFERENT CONFIGURATION



**VENTURI TYPE
HORIZONTAL INJECTOR**



**VERTICAL
INJECTOR**



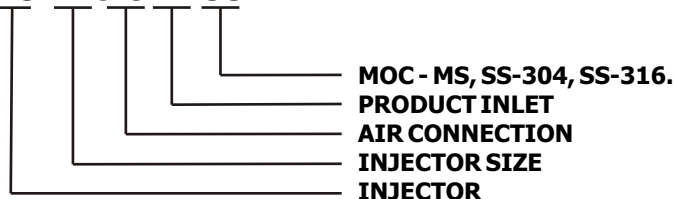
List of Some Products conveyed

- | | |
|-------------------|-------------------------------|
| 1. Plastic Pellet | 10. Sodium Sulphate |
| 2. Fly Ash | 11. Polymer Powder |
| 3. Coal | 12. Talcum Powder |
| 4. Iron Oxide | 13. Cement |
| 5. Graphite | 14. Sugar |
| 6. Caco3 | 15. Foods & Spices |
| 7. Plastic | 16. Fibre threads |
| 8. Fumes | 17. Paper & Plastic Film cuts |
| 9. Metal Oxide | |

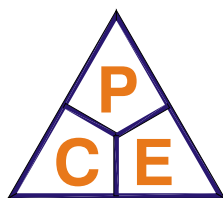
ALL DIMENSIONS ARE IN MM
DRAWING IS SUBJECT TO CONSTANT IMPROVEMENT

INJECTOR SIZE	A (mm)	B (mm)	C (mm)	AIR CONN.	PRODUCT INLET	CONVEYING PIPE DIA.	AIR REQUIREMENT IN Nm ³ /hr	CONVEYING RATE IN Kg/hr
DN 25	200	65	170	0.5"-1"	1"	DN 25	40 - 50	20 - 200
DN 40	280	75	230	0.5"-1.5"	1.5"	DN 40	80 - 120	45 - 550
DN 50	360	115	300	1"-2"	2"	DN 50	140 - 200	135 - 1000
DN 65	440	130	360	1.25"-2.5"	2.5"	DN 65	210 - 300	360 - 1700
DN 80	520	150	430	1.5"-3"	3"	DN 80	310 - 450	880 - 2500
DN 100	670	175	560	2.5"-4"	4"	DN 100	510 - 800	1300 - 4700
DN 125	825	215	700	3"-5"	5"	DN 125	850 - 1200	2700 - 7200
DN 150	980	250	830	3"-6"	6"	DN 150	1200 - 1800	4000 - 10500
DN 200	1290	240	1090	4"-8"	8"	DN 200	2200 - 3000	7000 - 19000

INJ-1-0.5-1-SS



- Flange as per DIN/ANSI Standard.
- Optional sizes available on request.



PAREKH CONSULTANTS & ENGINEERS

Office : C-11, Meeraj Apartments, Beh. Natubhai Centre, Gotri Road,
Baroda - 390005., Gujarat, India.
Telephone : 0091-265-2395677 / 5542226
Telefax : 0091-265-2391783
E-mail : pce@icenet.net

Website : www.pce-india.com